

Nombre: \_\_\_\_\_




Curso: \_\_\_\_\_ Fecha: \_\_\_\_\_

## COMPASES (II)

1. Completa con líneas divisorias las siguientes melodías:

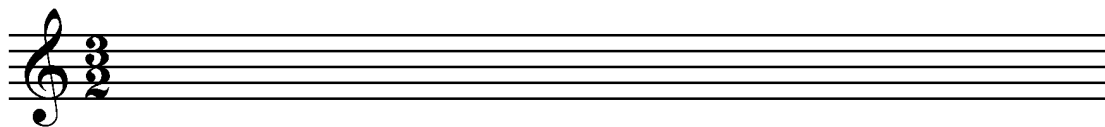


2. Escribe 3 ritmos posibles para completar un compás de cada uno de estos compases:

Por ejemplo:  $\frac{4}{4} \Rightarrow$   ;  ; 

3  
6  
8  
12

3. Completa 4 compases, variando las figuras y el nombre de las notas, de cada compás propuesto:



4. Completa con líneas divisorias las partituras siguientes:

“The Final Countdown” Europe; Compás = 4/4

Musical notation for measures 46-51 of "The Final Countdown" by Europe. The piece is in 4/4 time. The notation consists of two staves. The first staff starts at measure 46 and ends at measure 51. The second staff starts at measure 52 and ends at measure 57. Both staves feature eighth and sixteenth notes, with several triplet markings (indicated by a '3' above a bracket) over groups of three notes.

“Stille Nacht, heilige Nacht” Franz Xaver Gruber; Compás = 3/4

Musical notation for measures 10-26 of "Stille Nacht, heilige Nacht" by Franz Xaver Gruber. The piece is in 3/4 time. The notation consists of three staves. The first staff starts at measure 10 and ends at measure 18. The second staff starts at measure 19 and ends at measure 26. The music is written in a simple, melodic style with quarter and eighth notes.

“Fiesta Pagana” Mago de Oz; Compás = 12/8

Musical notation for measures 5-15 of "Fiesta Pagana" by Mago de Oz. The piece is in 12/8 time. The notation consists of four staves. The first staff starts at measure 5 and ends at measure 8. The second staff starts at measure 9 and ends at measure 12. The third staff starts at measure 13 and ends at measure 15. The music is characterized by a steady eighth-note pattern, typical of a waltz.